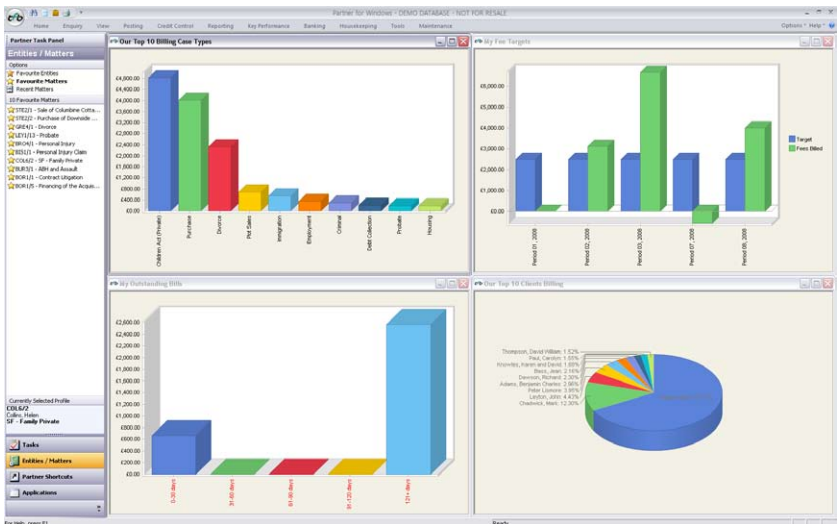


BUSINESS INTELLIGENCE

Use Partner for Windows Digital Dashboard to give clear real-time information on demand

Everyone in a busy practice needs information which is not only ‘at a glance’ but also quick and easy to access. This can be achieved with the Partner for Windows Digital Dashboard which displays information in a variety of user-friendly formats and provides drill-down and links to other parts of the software.

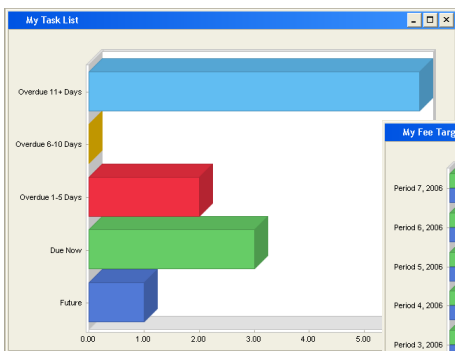
The Partner for Windows Digital Dashboard is made up of a number of reports displayed in different ways, whether in a colourful graph, HTML or spreadsheet. The software comes with the reports as standard and firms can decide which type of user sees which reports. All reports show live data and any of them can be mandatory. Multiple dashboard reports can be set to open on log-in to Partner but can be ‘tucked away’ during the day with a simple one key access to the set, as required.



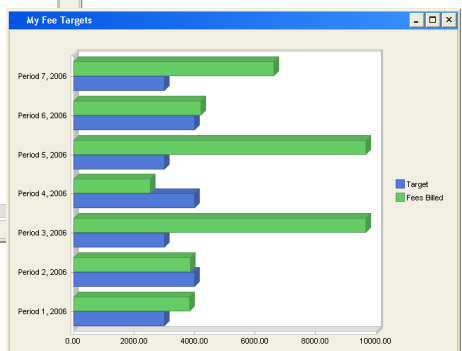
Each dashboard can be customised depending on what the user wants to see

With a flexible set-up, firms can decide who sees which report:

- Fee Earners may want to see their targets



'My Task List' dashboard screen



'My Fee Targets' dashboard screen

ABOUT PARTNER FOR WINDOWS

Partner for Windows is a comprehensive practice and case management system including accounting, case and document management, time recording and billing which together form a complete system to meet the back and front office requirements of a modern legal practice.

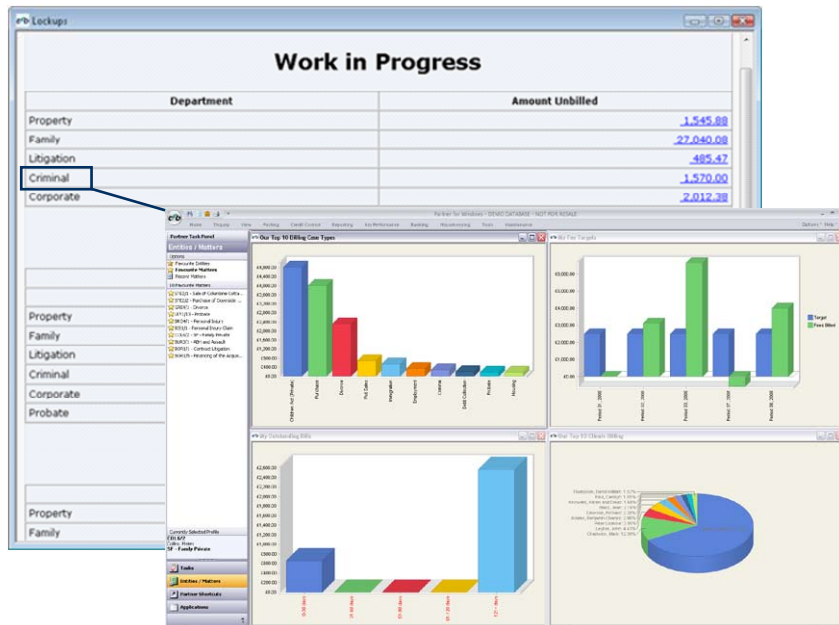
The extensive functionality of Partner for Windows can further be enhanced using a range of specialist third party solutions designed to address key business issues for the legal profession. Each of these solutions is seamlessly integrated into Partner for Windows to ensure that the single practice and case management database remains at the core of the system.

CONTACT
Sales: 01489 609010
Email: tfb@tikitt.com
Web: www.tikittfb.com

Postal Address:
 1-2 Kingdom Close
 Kingdom Business Park
 Segensworth East
 Fareham
 PO15 5TJ

A PARTNER FOR WINDOWS FACT SHEET

- Secretaries may want to see their 'To Do list' – where they can drill down to each task
- Partners may want to see performance information
- Managing Partners or Accounts may want to see a full series of 'lockups' to monitor the business as a whole



Easily access and drill-down into performance and financial information via the 'Lock-up' dashboard

ABOUT TIKITTFB

With more than 30 years of dedication to the legal profession, TikitTFB supports over 600 legal practices throughout the UK with managing risk, ensuring compliance and enhancing profitability using our award-winning Partner for Windows Practice and Case Management system.

Partner for Windows uses industry standard Microsoft technology, enabling the software to be smoothly integrated into existing infrastructures. Catering for firms of all shapes and sizes, Partner for Windows provides a flexible and comprehensive solution which can be readily tailored to meet the needs of practices now and in the future.

Part of the Tikit Group, provider of IT services and software to 90% of the UK's top 100 law firms, TikitTFB is well positioned to make magic circle technology accessible and affordable to large regional and high street firms.

To view the latest fact sheet on Digital Dashboard please visit http://www.tfbplc.co.uk/assets/library/documents/Digital_Dashboard.pdf

OTHER SOLUTIONS THAT INTEGRATE WITH PARTNER FOR WINDOWS DIGITAL DASHBOARD ARE:

- Accounting Partner** for legal accounts and desktop environment
- Automated Archive Manager/Extended Archive Manager** for matter archiving
- Management Reporting** consultancy/services
- Crystal Reports** for data mining and report development

CONTACT

Sales: 01489 609010

Email: tfb@tikit.com

Web: www.tikittfb.com

Postal Address:

1-2 Kingdom Close
Kingdom Business Park
Segensworth East
Fareham
PO15 5TJ